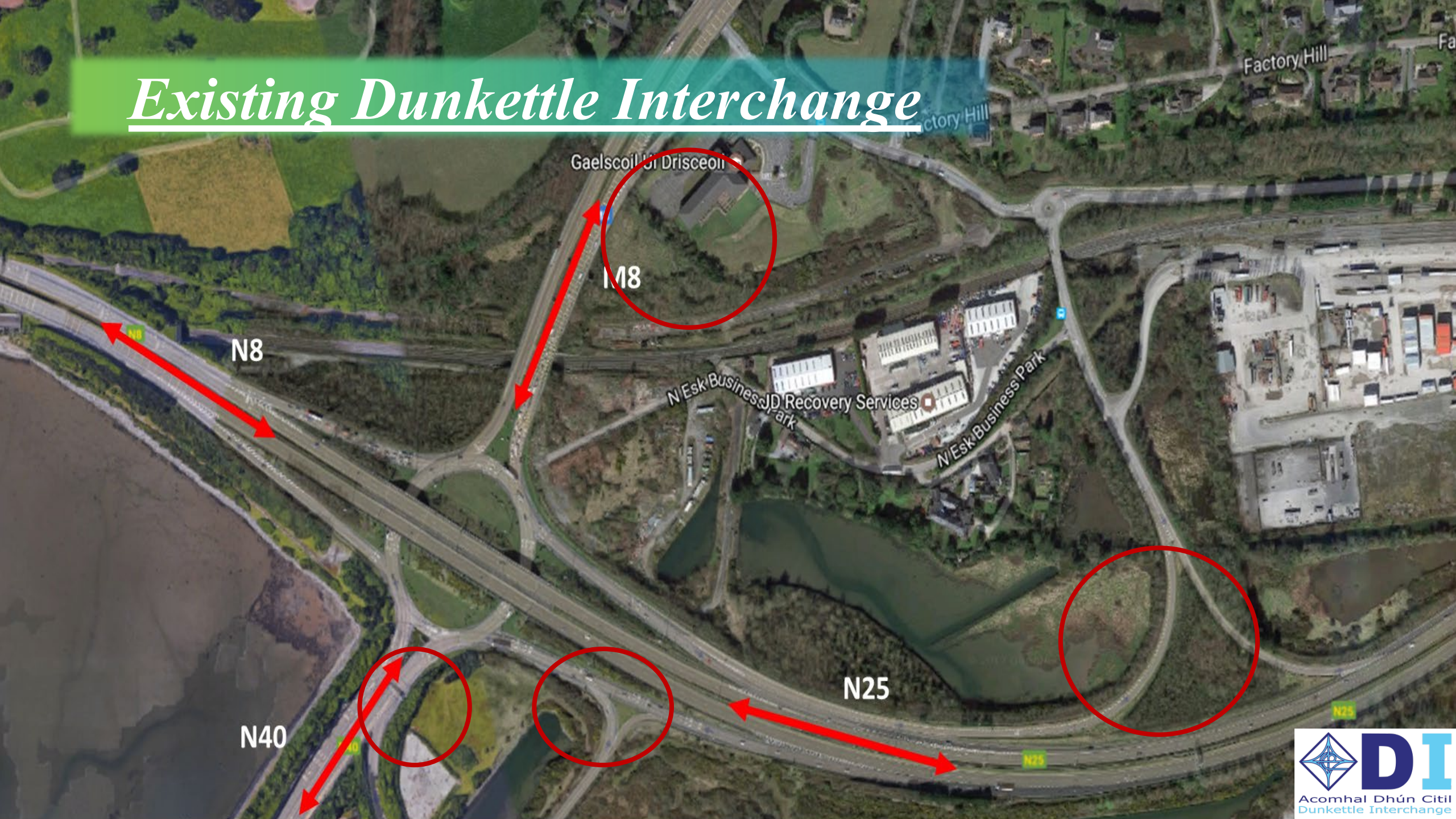




Stakeholder Engagement in 2020:

Dunkettle Interchange Upgrade – A Case Study

Existing Dunkettle Interchange



Gaelscoil Mí Drisceoil

N18

N8

N Esk Business Park
JD Recovery Services

N Esk Business Park

N25

N40



The Problem!



Glanmire

N8

M8

Gaelscoil

North Esk
Business Park

Tivoli

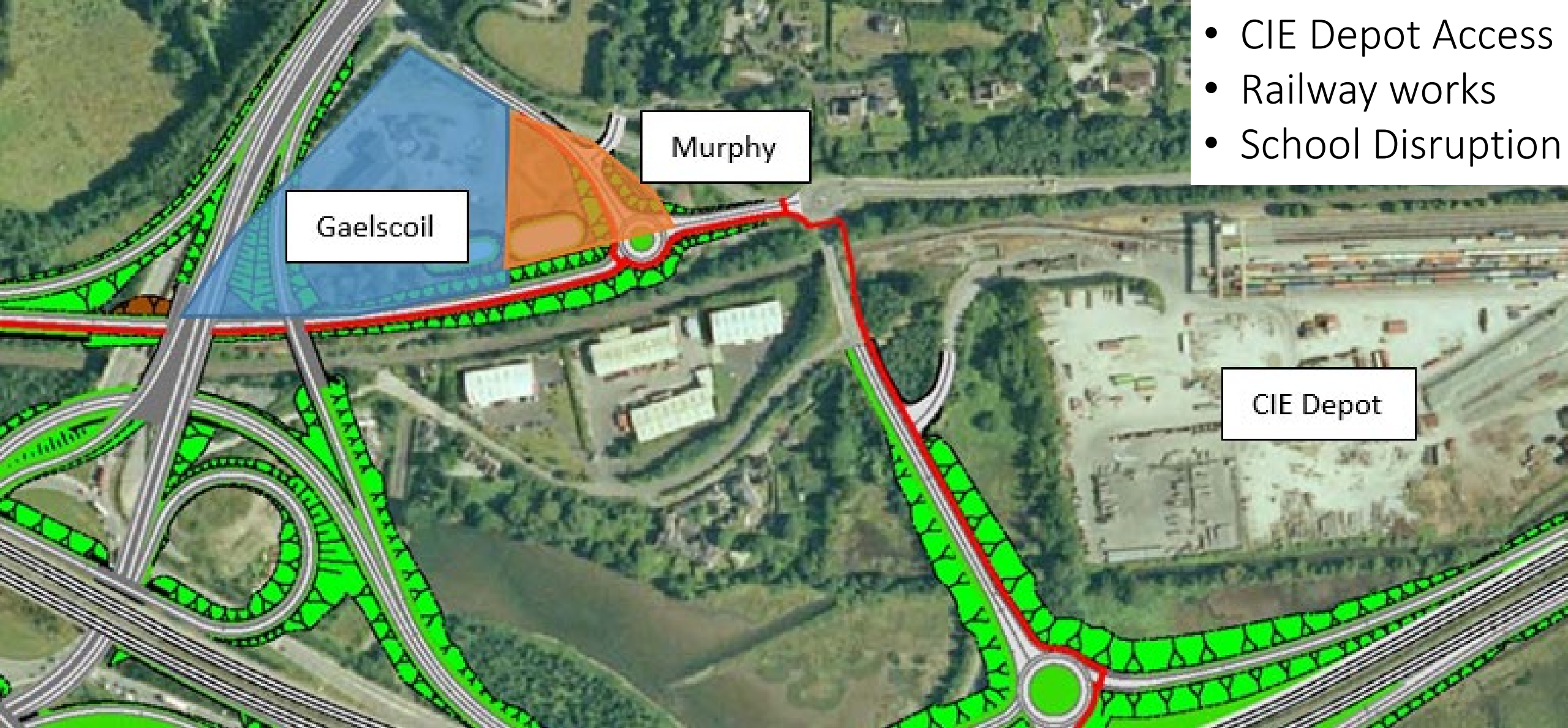
Jack Lynch Tunnel

Hoffmann
Business Park

Little
Island

R623

R623



- CIE Depot Access
- Railway works
- School Disruption

Gaelscoil

Murphy

CIE Depot



Landowners – Little Island – Key Issues

- Health & Safety
- EPA Licensing
- Emergency Response
- Disruption to Services
- Nuisance
- Access

Tapella

Pfizer

Cara Partners

Punch

BASF

Little Island - Pfizer

- 1 Noise
- 2 Dust – Filters
- 3 Vibration – Monitoring
- 4 Barriers
- 5 Works along Boundary



Dunkettle Interchange Upgrade

*Little
Island*

Why & How?

Before deciding HOW to communicate with People, we need to determine WHO?, WHEN? & WHY?

What do we want to tell people?

- WHAT we're doing,
- WHY we're doing it,
- HOW it will effect them,
- HOW they themselves can mitigate the impact.



How?

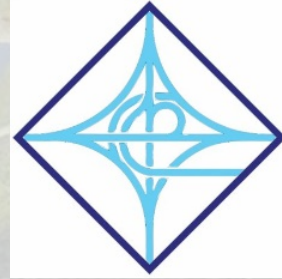
Project Website

www.dunkettle.ie



Twitter – Dunkettle Interchange

@dunkettleint



Drone Footage



Dunkettle Dashboard



Weekly Newsletter

www.dunkettle.ie/newsletters

NEWSLETTER SIGNUP



Dunkettle Live Traffic App



Download on the
App Store



GET IT ON
Google Play

Project Website



HOME NEWS TRAFFIC PROJECT FAQs ABOUT US 1800 810077



Dunkettle Interchange

Upgrade Scheme

✉ NEWSLETTER SIGN-UP
Keep up to date

A PROJECT INFORMATION
Find out more about the project

📡 LATEST TRAFFIC INFO
Live Traffic Report
www.dunketttraffic.ie/

Welcome to Dunkettle

Dunkettle Interchange



Newsletter

Dunkettle | N40 - Progress Update 4th September 2020



N40 / Dunkettle Interchange Works Progress Updates <roadconstruction@ccc-site.com>
To: Jim McCarthy

Reply Reply All Forward

Fri 04/09/2020 12:01

If there are problems with how this message is displayed, click here to view it in a web browser.

Dunkettle Progress Update 4th August 2020

More Information at www.Dunkettle.ie

Twitter Website

Dunkettle Interchange Project - Advance Works

Upgrade *Dunkettle* to a largely free-flow interchange to alleviate traffic congestion.

- Local road realignment works in the Bury's Bridge area have reached substantial completion and no further significant traffic management measures are anticipated in this area. See photograph below.



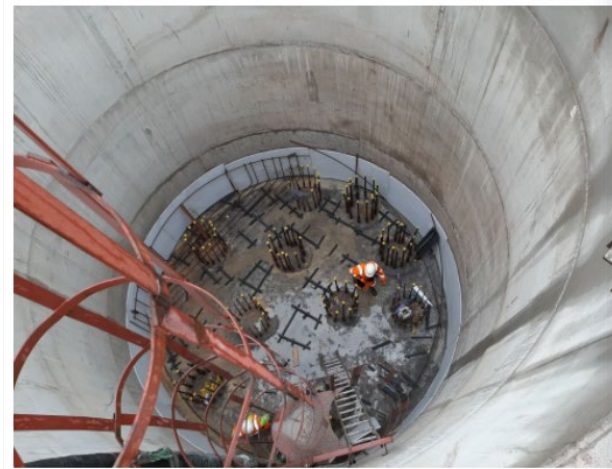
Composite aerial shot of the new local road layout with the Bury's Bridge roundabout in the background

- On the R623 Little Island Regional Road surfacing works on approach to the new roundabout are nearing completion. We expect to reach substantial completion in this area this month and all significant traffic management measures should be removed by Friday 18th September 2020. See photograph below.



Aerial shot of the recently completed R623 roundabout

- In the area of the N25 westbound diverge to the Dunkettle Interchange Roundabout, the concrete caisson structure adjoining the diverge lanes has reached substantial completion. See photograph below.



Vertical shot of the concrete caisson near the N25 diverge. This structure is well over 20 feet deep

- Commuters are reminded that the traffic app **Dunkettle Live** is available free of charge from both the Apple App Store and from the Google Play Store.
- Feedback to the app has been extremely positive and, given that traffic volumes at the Dunkettle Interchange are now in excess of 90% of pre-Covid-19 shutdown levels, motorists are encouraged to download the app in order to facilitate efficient planning of journeys.



Dunkettle Live App: Download from [Apple App store](#) or from [Google Play store](#)



As always, if there are any queries or comments in relation to these works, please contact us at:
Phone: 1800 810077 (at any time).
Email: roadconstruction@ccc-site.com.



Social Media Reach



18:03

Dunkettle Interchange
@dunkettleint
Followed by no one you follow
Cork, Ireland dunkettle.ie
Joined April 2018
0 Following 0 Followers

Tweets Tweets & replies Media Likes

Dunkettle Interch... · 27/11/2018
N40 Update: Incident at N40 J6 Kinsale Rd westbound now cleared

Dunkettle Interch... · 27/11/2018
N40 Update: Incident at J5 Kinsale Rd westbound now cleared

Dunkettle Live

Recording

09:18

Tuesday, 8 September

Notifications Dashboard

N8

Feeds are online

DUNKETTLE CONTROL PANEL

ADD UPDATE

SCHEDULE UPDATE

MANAGE UPDATES

MANAGE LOCATIONS

MANAGE USERS

KILL FEEDS

Welcome back Jim
Usergroup - Administrator

Add update

Message (required)
#corktraffic #dunkettle Traffic is continuing to move well through the Dunkettle Interchange this

Affected road
None selected

Event status
Green

Event icon
thumbs-up

Send push notification
Push notifications cannot be deleted once sent

Post to social media

Delay in minutes

Expire event in 1 hour(s)

SUBMIT

Little Island

R623



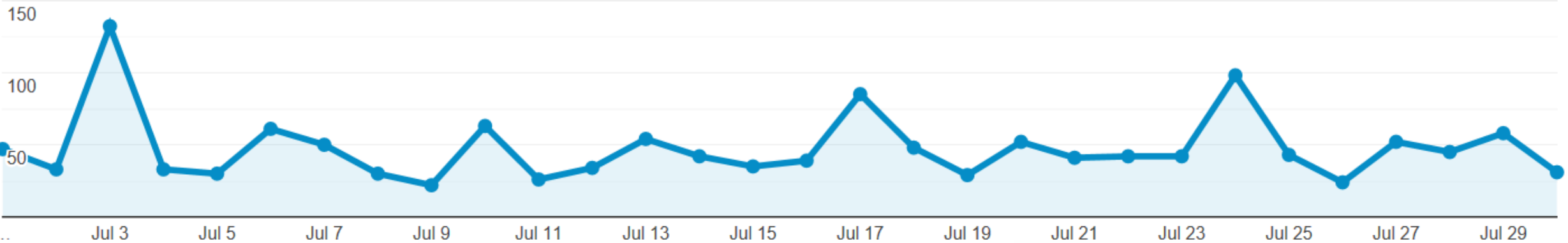
**Is Anybody
Listening ???**

Project Website Analytics

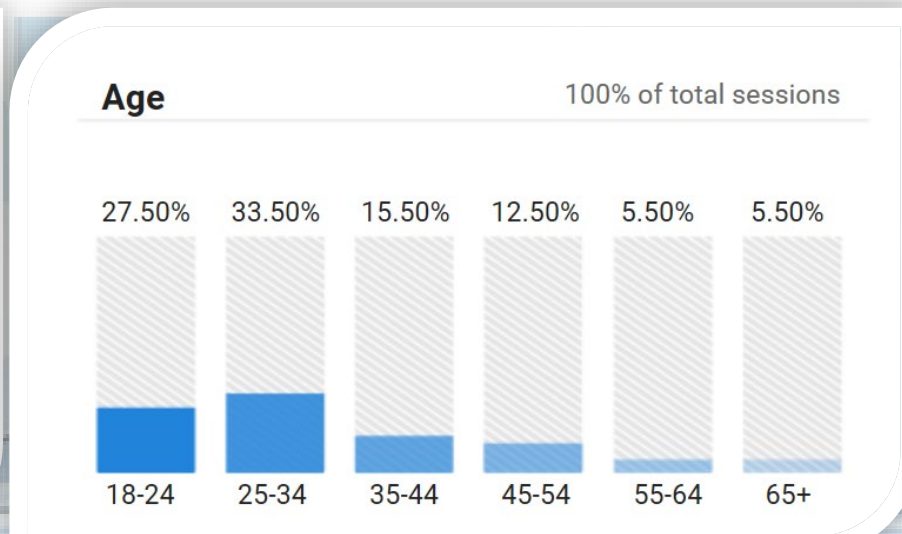
Users ▼ vs. [Select a metric](#)

Hourly Day Week Month

● Users

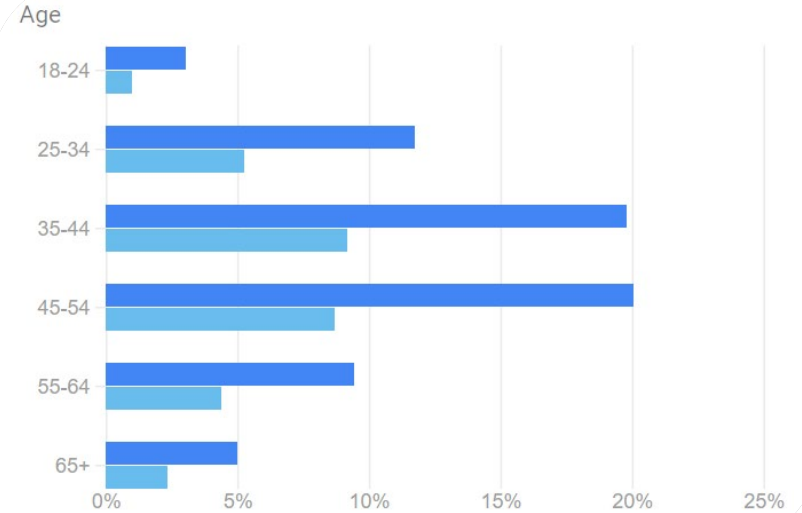
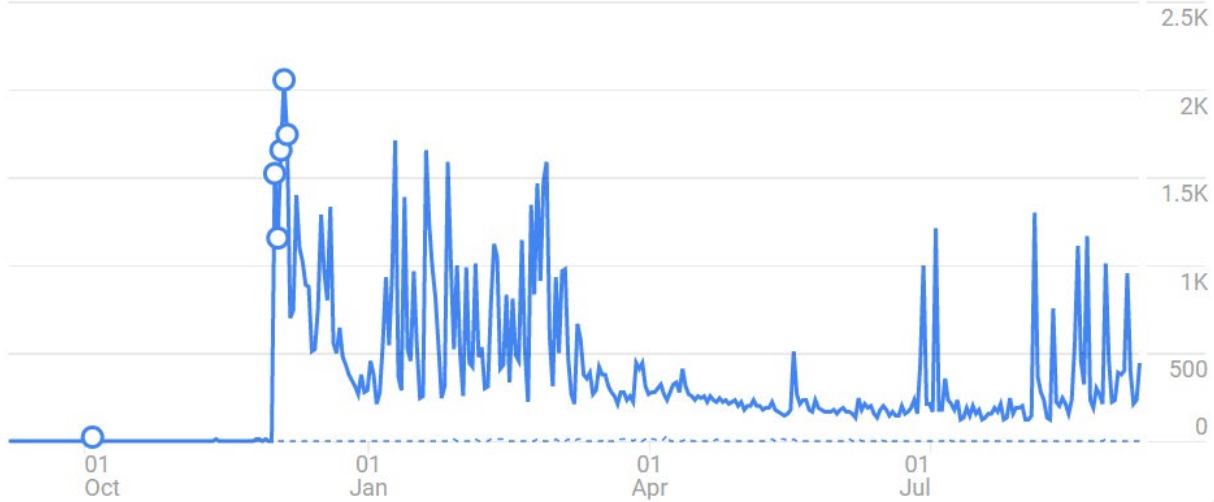


Browser	Users
	15,975 % of Total: 100.00% (15,975)
1. Chrome	8,194 (50.96%)
2. Safari	3,800 (23.63%)
3. Internet Explorer	1,721 (10.70%)
4. Samsung Internet	865 (5.38%)
5. Edge	431 (2.68%)
6. Firefox	414 (2.57%)



Device Category	Users
	15,975 % of Total: 100.00% (15,975)
1. mobile	8,646 (53.38%)
2. desktop	6,860 (42.36%)
3. tablet	690 (4.26%)

App Analytics



Demographics ?

Gender



● Male
68.7%
↑ 2,393.3%

● Female
31.3%
 -

User engagement > Screen class

Screen class	% total		Avg. time
LiveFeedDetailVC	45.45%	↑ 17...6%	0m 15s
SingleFeedActivity	18.14%	↑ 15...%	0m 12s
MapVC	15.93%	↑ 1...%	0m 05s
MainActivity	9.62%	↑ 2...%	0m 06s
LiveFeedVC	4.69%	↑ 10...1%	0m 03s
LiveFeedActivity	2.26%	↑ 69...8%	0m 02s
MostRecen...Activity	1.55%	↑ 1...%	0m 08s
MostRec...datesVC	1.41%	↑ 23...%	0m 09s

So, do we need to talk to people any more?

YES!



N8

Tivoli

Gaelscoil

North Esk
Business Park

Thank You

Any Questions?

Jack Lynch Tunnel

Hoffmann
Business Park

Little
Island

R623