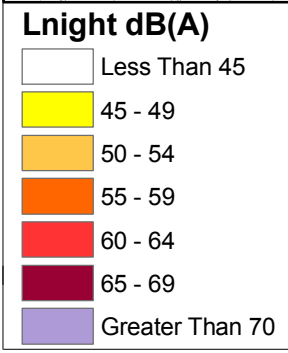
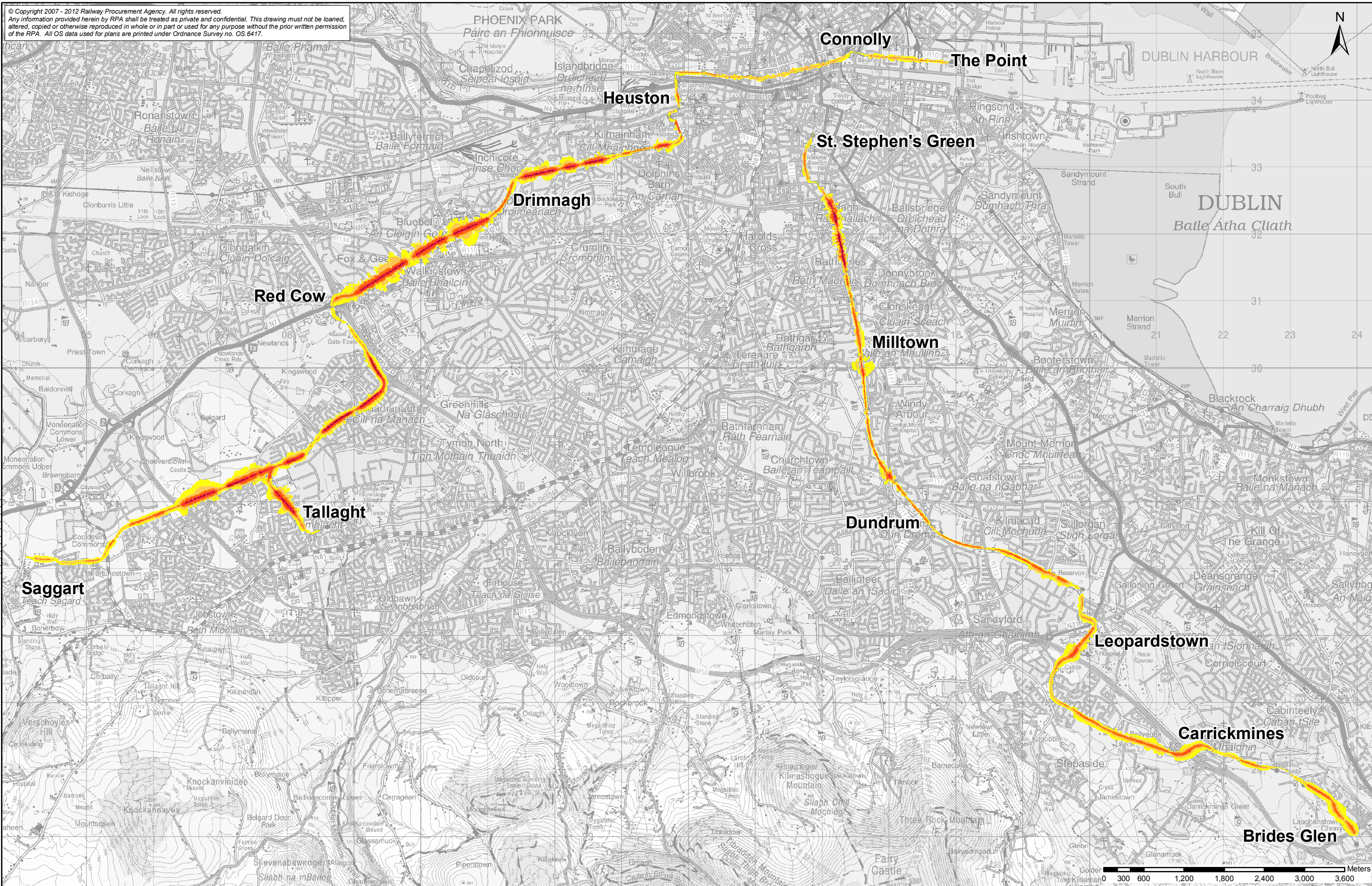



© Copyright 2007 - 2012 Railway Procurement Agency. All rights reserved.  
 Any information provided herein by RPA shall be treated as private and confidential. This drawing must not be loaned, altered, copied or otherwise reproduced in whole or in part or used for any purpose without the prior written permission of the RPA. All OS data used for plans are printed under Ordnance Survey no. OS.6417.






**RPA**  
Railway Procurement Agency

Gríonmhaircraíocht  
Um Fháil Iarróid

Parkgate Business Centre,  
Parkgate Street,  
Dublin 8, Ireland.

Phone +353 1 646 3400  
Fax +353 1 646 3401  
www.rpa.ie



PREPARED: COF	REVIEWED: SB	APPROVED: MF
	CHECKED: MF	DATE: July 2012
		SCALE: 1:55,000

LOCATION: Luas Red and Green Lines
SPECIALIST TOPIC: <b>Average Night Time Sound Values (Lnight)</b>
AREA NO.:
PLAN NO.:
SUBJECT: NOISE MAPPING