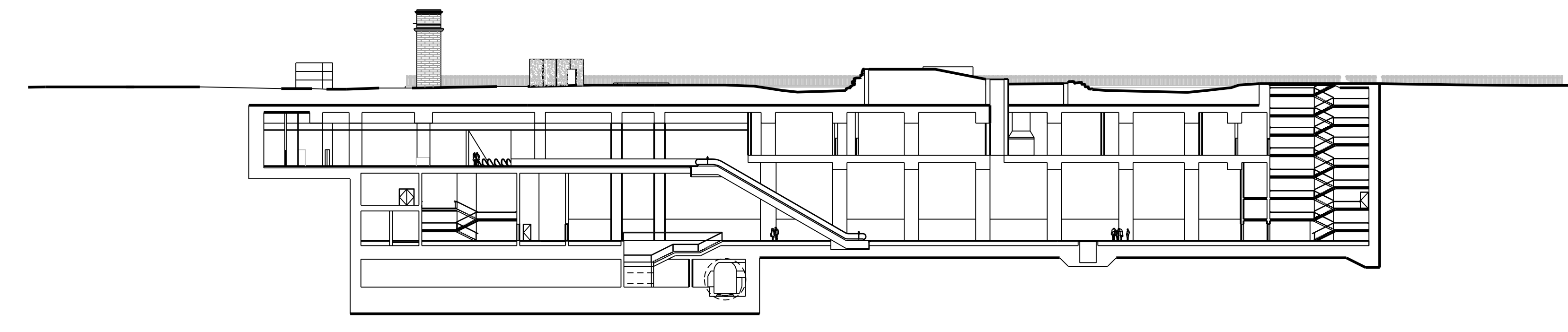
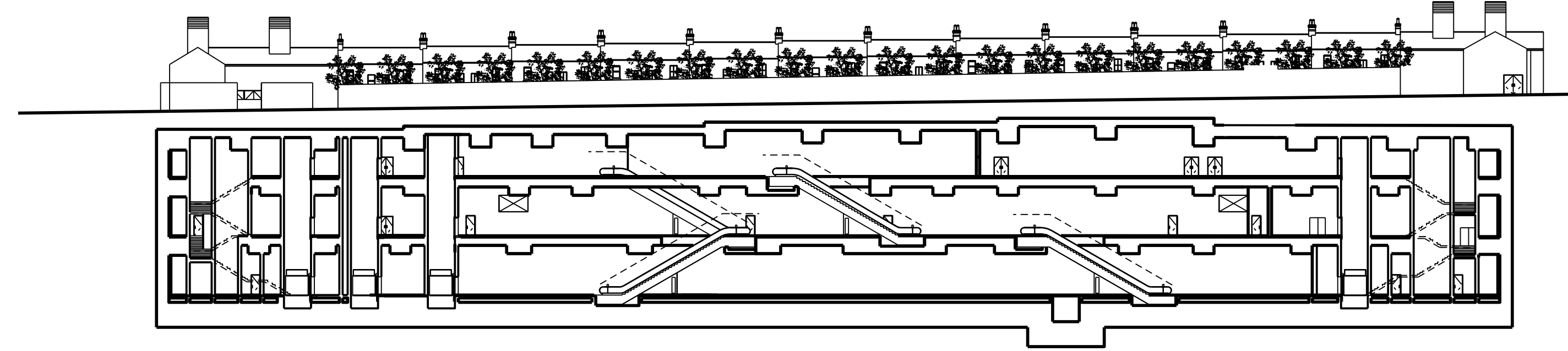


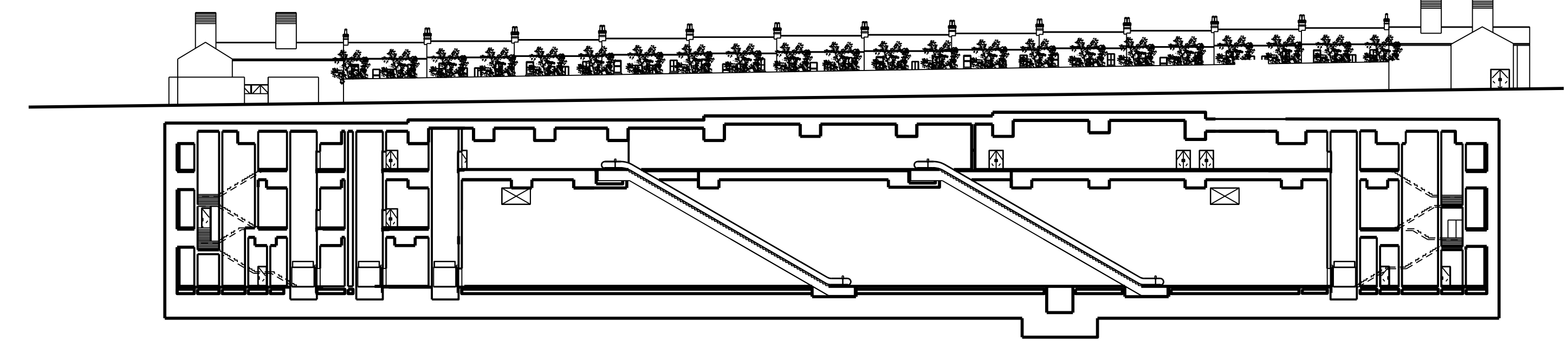
**ST STEPHENS GREEN**  
SCALE 1:500



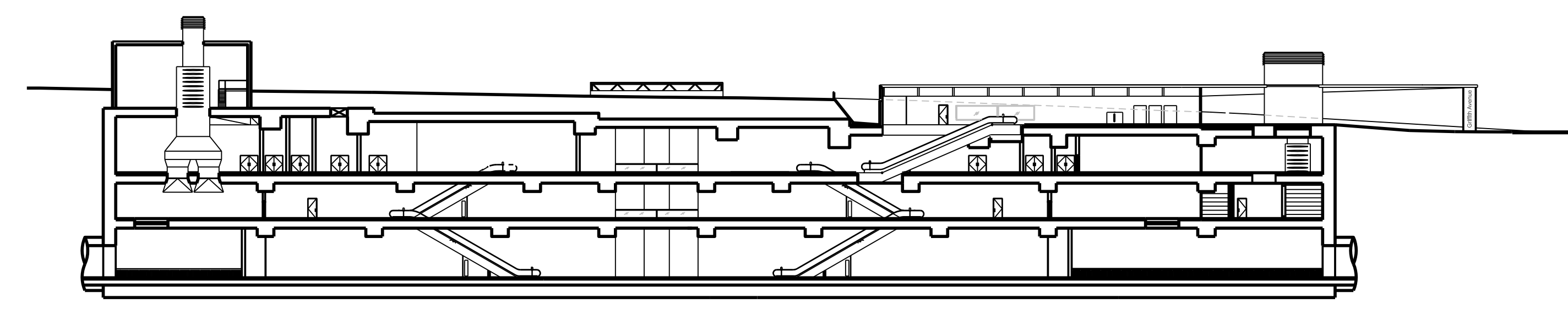
**ST STEPHENS GREEN ALTERNATIVE CONFIGURATION**  
SCALE 1:500



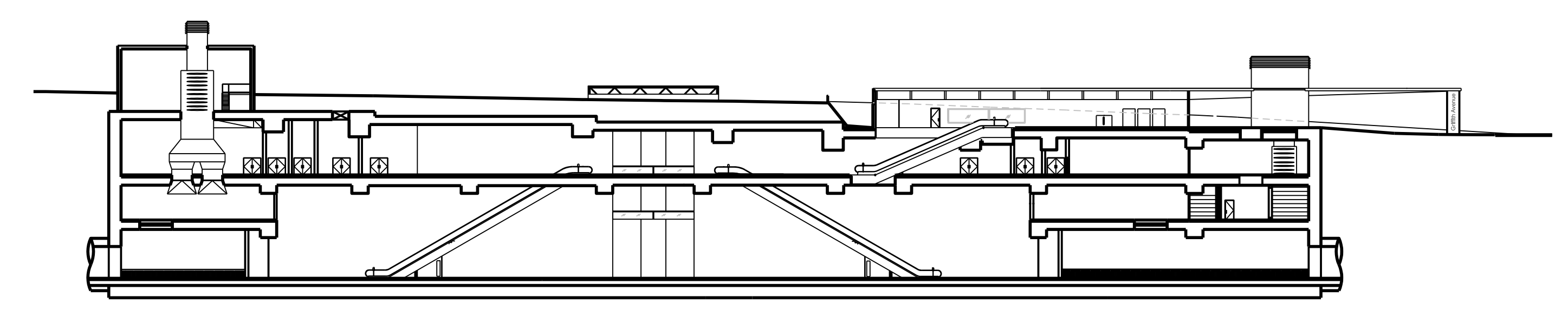
**MATER STOP**  
SCALE 1:500



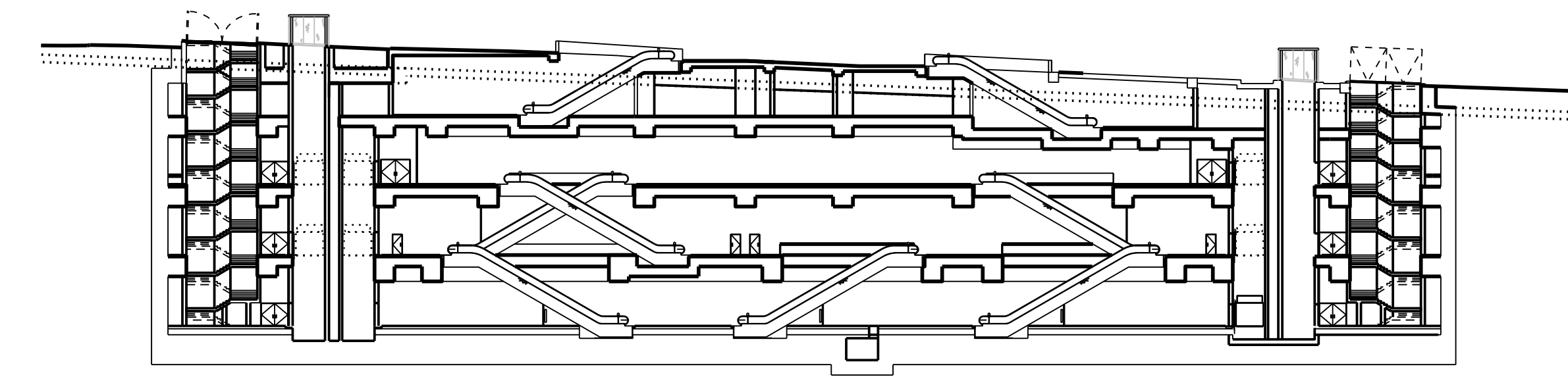
**MATER STOP ALTERNATIVE CONFIGURATION**  
SCALE 1:500



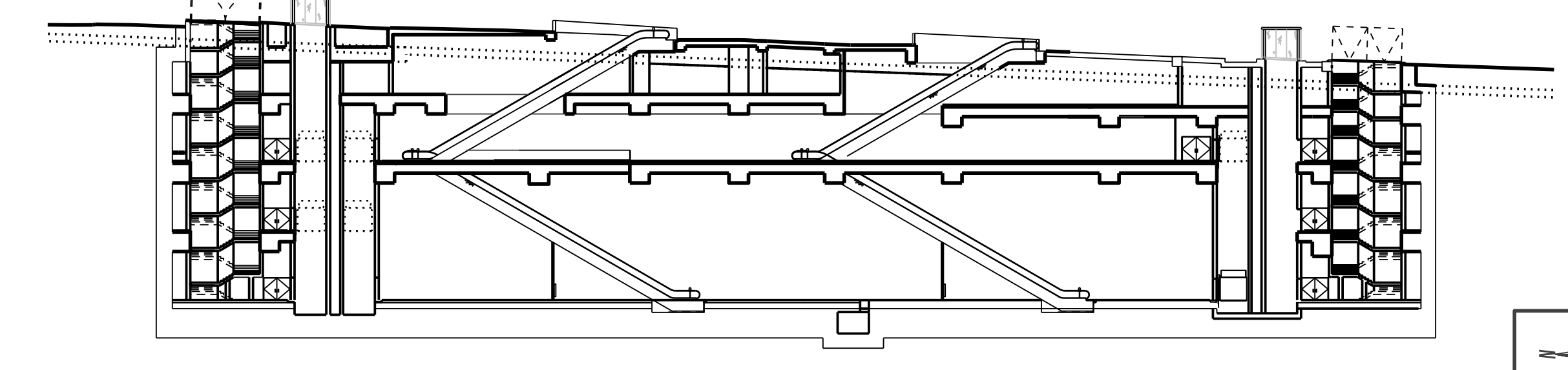
**GRIFFITH AVENUE**  
SCALE 1:500



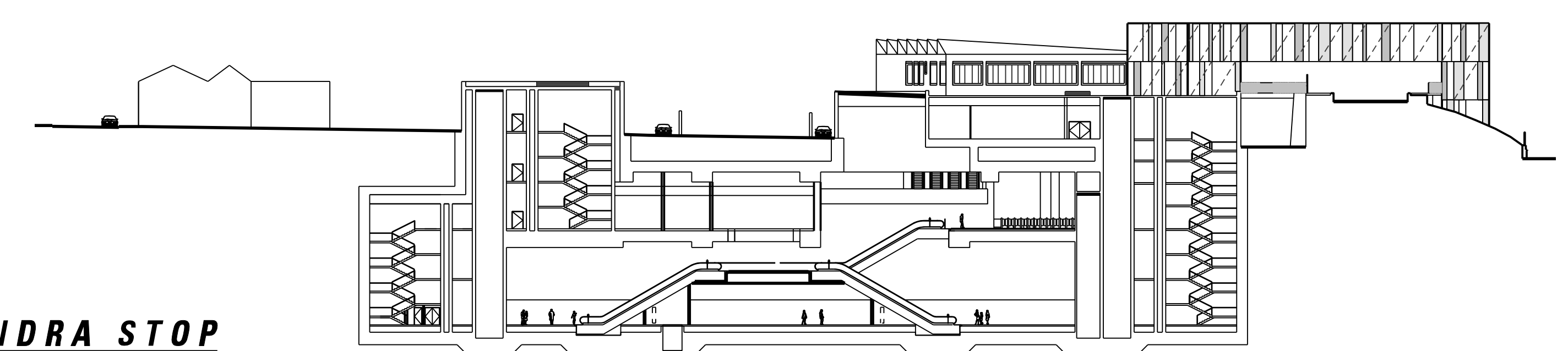
**GRIFFITH AVENUE ALTERNATIVE CONFIGURATION**  
SCALE 1:500



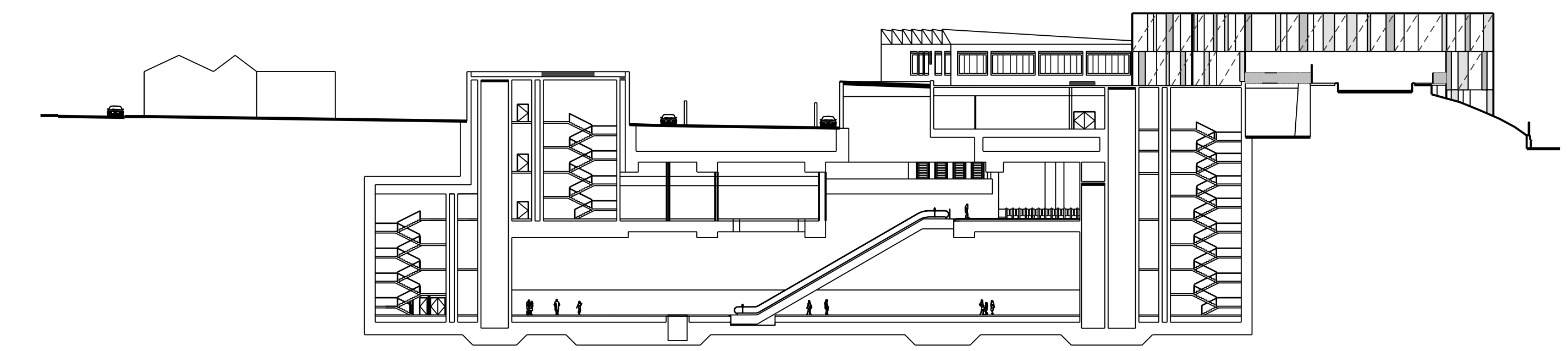
**PARNELL SQUARE**  
SCALE 1:500



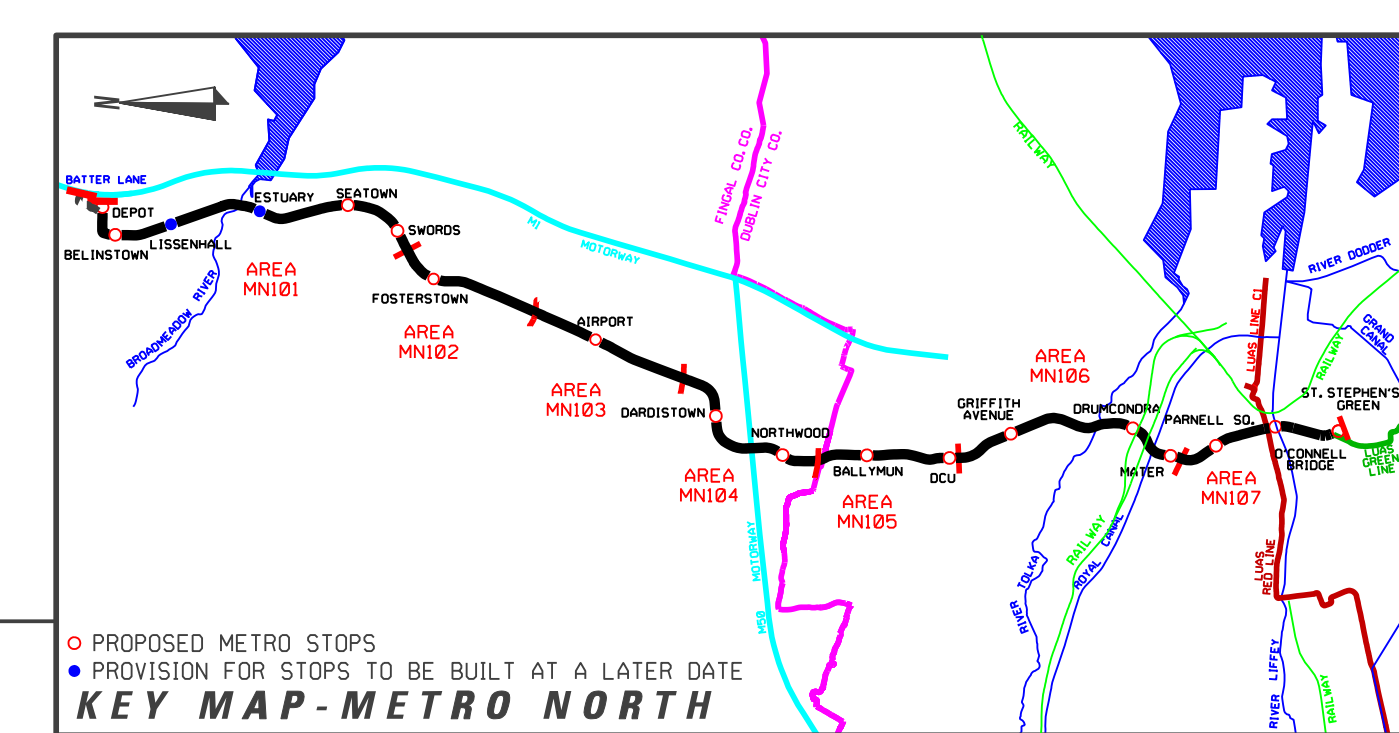
**PARNELL SQUARE ALTERNATIVE CONFIGURATION**  
SCALE 1:500



**DRUMCONDRA STOP**  
SCALE 1:500



**DRUMCONDRA STOP ALTERNATIVE CONFIGURATION**  
SCALE 1:500



REVISION	DATE	MODIFICATION	STATUS	CHECKED/APPROVED

**RPA** Railway Procurement Agency  
 CONTACT: 011 948 3444  
 PROJECTS: 011 948 3444  
 OPERATIONS: 011 948 3444  
 TRAINING: 011 948 3444  
 www.rpa.ie

**METRO**

TITLE:  
**RAILWAY WORKS  
LINE MN - STRUCTURES  
TYPICAL EXAMPLES  
OF ALTERNATIVE SECTIONS**

PREPARED: RPA OFFICE	CHECKED: GEOFFREY FEATHERSTONE
SCALE: 1:500	APPROVED: ROBY O'CONNOR
DATE: AUGUST 2008	

AREA NO: <b>000</b>	PLAN NO: <b>MN-ST 000 0-0</b>	SUBJECT: <b>RAIL ORDER</b>
------------------------	----------------------------------	-------------------------------

Copyright Railway Procurement Agency  
 This drawing is confidential and the copyright in it is owned by the RPA. This drawing must not be either loaned,  
 copied or otherwise reproduced in whole or in part or used for any purpose without the prior permission of the RPA.  
 All U.S. data used for plans is generated from U.S. digitized maps and was printed under Ordnance Survey permit no. 05-8817

INTERNAL DOCUMENT NUMBER	STAGE	LINE	CONTRACT	ELEMENT	OPW NO	OPW REV
	L	MN	000	T0	000001	A